



ACCESSORIES CATALOGUE

MODEL: NAVARA NP300 - D23

ROAD RANGER®

NISSAN

40

years of market presence

12000

hardtops annually production

180

qualified employees

48

distributors around the world



ROAD RANGER®

The Road Ranger brand was established in the 1970s. At that time, we were the first and only company in Europe manufacturing hardtops for pickups and camping hardtops for open-platform cars. Rather than manual lamination, the Resin Transfer Molding (RTM) light technology, i.e. vacuum moulding, is increasingly used in production.

The Road Ranger brand consists of a group of companies known as Dr. Höhn Group, which includes the following:

- Dr. Höhn GmbH based in Ingelfingen, Germany – sales to Western European markets;
- Dr Höhn Sp. z o.o. – factory manufacturing Road Ranger products located in Ostroda, Poland;
- MKT Car Technik Sp. z o.o. based in Ostroda, Poland – sales to other markets.





EXTRAS AVAILABLE BY HARDTOP ORDERING:

- » Solid rear door (unglazed)
- » Sliding roof bars
- » ABS roof vent
- » LED workinglight
- » Roof reinforcement
- » Colour-matched side flaps



Sliding roof bars



ABS roof vent



LED workinglight



HARDTOP NI DC RH05 IE S (STANDARD)

Premium Hardtop in Standard version, i.e. with solid side panels.

Features: cab high, glazed rear door (glass is seated in a thermoformed ABS frame), tinted rear door, heated rear screen, integrated spoiler, opening bulkhead window (air circulation, ability to wash the vehicle's window), carpet lining, automatic interior LED light, rear door lock integrated with the car's central lock system, color coded, complete mounting set.

The hardtop is equipped with tailgate water protectors, i.e. thermoformed items riveted to the vehicle's body near the rear lamps. The protectors are set with the hardtop rear door seal which ends at the truck bed floor level. In this way, the sides of the vehicle tailgate are sealed.

Art. 1900972

HEATED GLAZED REAR DOOR (GLASS IS SEATED IN A THERMOFORMED ABS FRAME)



CHECK THE PRICE AT:

WWW.ROADRANGER.PL



HARDTOP NI DC RH05 IE F (SPECIAL)

Premium hardtop in Special version, i.e. with non-opening side windows.

Features: cab high, glazed rear door (glass is seated in a thermoformed ABS frame), tinted rear door, heated rear screen, integrated spoiler, opening bulkhead window (air circulation, ability to wash the vehicle's window), carpet lining, automatic interior LED light, rear door lock integrated with the car's central lock system, color coded, complete mounting set.

The hardtop is equipped with tailgate water protectors, i.e. thermoformed items riveted to the vehicle's body near the rear lamps. The protectors are set with the hardtop rear door seal which ends at the truck bed floor level. In this way, the sides of the vehicle tailgate are sealed.

CHECK THE PRICE AT:

WWW.ROADRANGER.PL

Art. 1900973



HARDTOP NI DC RH05 IE S2 (PROFI)

Premium Hardtop in Profi version, i.e. with unglazed side flaps made of black ABS (remote control opening).

Features: cab high, glazed rear door (glass is seated in a thermoformed ABS frame), tinted rear door, heated rear screen, integrated spoiler, opening bulkhead window (air circulation, ability to wash the vehicle's window), carpet lining, automatic interior LED light, rear door lock integrated with the car's central lock system, color coded, complete mounting set.

The hardtop is equipped with tailgate water protectors, i.e. thermoformed items riveted to the vehicle's body near the rear lamps. The protectors are set with the hardtop rear door seal which ends at the truck bed floor level. In this way, the sides of the vehicle tailgate are sealed.

CHECK THE PRICE AT:

WWW.ROADRANGER.PL

Art. 1900975



HARDTOP NI DC RH05 IE FS2 (PROFI+)

Premium Hardtop in Profi+ version, i.e. with side windows which open upwards (remote control opening).

Features: cab high, glazed rear door (glass is seated in a thermoformed ABS frame), tinted rear door, heated rear screen, integrated spoiler, opening bulkhead window (air circulation, ability to wash the vehicle's window), carpet lining, automatic interior LED light, rear door lock integrated with the car's central lock system, color coded, complete mounting set.

The hardtop is equipped with tailgate water protectors, i.e. thermoformed items riveted to the vehicle's body near the rear lamps. The protectors are set with the hardtop rear door seal which ends at the truck bed floor level. In this way, the sides of the vehicle tailgate are sealed.

Art. 1900974

CHECK THE PRICE AT:

WWW.ROADRANGER.PL





HARDTOP NI DC RH04 IE S (STANDARD)

Premium Hardtop in Standard version, i.e. with solid side panels.

Features: cab high, glazed rear door (glass is seated in a thermoformed ABS frame), tinted rear door, heated rear screen, integrated spoiler, opening bulkhead window (air circulation, ability to wash the vehicle's window), carpet lining, automatic interior LED light, rear door lock integrated with the car's central lock system, color coded, complete mounting set.

The hardtop is equipped with tailgate water protectors, i.e. thermoformed items riveted to the vehicle's body near the rear lamps. The protectors are set with the hardtop rear door seal which ends at the truck bed floor level. In this way, the sides of the vehicle tailgate are sealed.

Art. 1900864



CHECK THE PRICE AT:

WWW.ROADRANGER.PL



HARDTOP NI DC RH04 IE F (SPECIAL)

Premium hardtop in Special version, i.e. with non-opening side windows.

Features: cab high, glazed rear door (glass is seated in a thermoformed ABS frame), tinted rear door, heated rear screen, integrated spoiler, opening bulkhead window (air circulation, ability to wash the vehicle's window), carpet lining, automatic interior LED light, rear door lock integrated with the car's central lock system, color coded, complete mounting set.

The hardtop is equipped with tailgate water protectors, i.e. thermoformed items riveted to the vehicle's body near the rear lamps. The protectors are set with the hardtop rear door seal which ends at the truck bed floor level. In this way, the sides of the vehicle tailgate are sealed.

Art. 1900865



CHECK THE PRICE AT:

WWW.ROADRANGER.PL



HARDTOP NI DC RH04 IE S2 (PROFI)

Premium Hardtop in Profi version, i.e. with unglazed side flaps made of black ABS (remote control opening).

Features: cab high, glazed rear door (glass is seated in a thermoformed ABS frame), tinted rear door, heated rear screen, integrated spoiler, opening bulkhead window (air circulation, ability to wash the vehicle's window), carpet lining, automatic interior LED light, rear door lock integrated with the car's central lock system, color coded, complete mounting set.

The hardtop is equipped with tailgate water protectors, i.e. thermoformed items riveted to the vehicle's body near the rear lamps. The protectors are set with the hardtop rear door seal which ends at the truck bed floor level. In this way, the sides of the vehicle tailgate are sealed.

Art. 1900914



CHECK THE PRICE AT:

WWW.ROADRANGER.PL



HARDTOP NI DC RH04 IE FS2 (PROFI+)

Premium Hardtop in Profi+ version, i.e. with side windows which open upwards (remote control opening).

Features: cab high, glazed rear door (glass is seated in a thermoformed ABS frame), tinted rear door, heated rear screen, integrated spoiler, opening bulkhead window (air circulation, ability to wash the vehicle's window), carpet lining, automatic interior LED light, rear door lock integrated with the car's central lock system, color coded, complete mounting set.

The hardtop is equipped with tailgate water protectors, i.e. thermoformed items riveted to the vehicle's body near the rear lamps. The protectors are set with the hardtop rear door seal which ends at the truck bed floor level. In this way, the sides of the vehicle tailgate are sealed.

Art. 1900866



CHECK THE PRICE AT:

WWW.ROADRANGER.PL



HARDTOP NI KC RH04 IE S (STANDARD)

Premium hardtop with a modern design in Standard version, i.e. with solid side panels.

Features: cab high, glazed rear door (glass in ABS frame), heated rear screen, integrated spoiler with the third brake light, non-opening bulkhead window, carpeted lining, automatic interior LED light, rear door lock integrated with the car's central lock system, color coded, complete mounting set.

The hardtop is equipped with tailgate water protectors, i.e. thermoformed items riveted to the vehicle's body near the rear lamps. The protectors are set with the hardtop rear door seal which ends at the truck bed floor level. In this way, the sides of the vehicle tailgate are sealed.

Art. 1901062



HARDTOP NI KC RH04 IE F (SPECIAL)

Hardtop with a modern design in Special version, i.e. with non-opening side windows.

Features: cab high, glazed rear door (glass in ABS frame), heated rear screen, integrated spoiler with the third brake light, non-opening bulkhead window, carpeted lining, automatic interior LED light, rear door lock integrated with the car's central lock system, color coded, complete mounting set.

The hardtop is equipped with tailgate water protectors, i.e. thermoformed items riveted to the vehicle's body near the rear lamps. The protectors are set with the hardtop rear door seal which ends at the truck bed floor level. In this way, the sides of the vehicle tailgate are sealed.

Art. 1901060



Please note, this is an illustrative photo showing Standard version with solid side panels.

CHECK THE PRICE AT:

WWW.ROADRANGER.PL

CHECK THE PRICE AT:

WWW.ROADRANGER.PL



HARDTOP NI KC RH04 IE S2 (PROFI)

Premium Hardtop in Profi version, i.e. with unglazed side flaps made of black ABS (remote control opening).

Features: cab high, glazed rear door (glass in ABS frame), heated rear screen, integrated spoiler with the third brake light, non-opening bulkhead window, carpeted lining, automatic interior LED light, rear door lock integrated with the car's central lock system, color coded, complete mounting set.

The hardtop is equipped with tailgate water protectors, i.e. thermoformed items riveted to the vehicle's body near the rear lamps. The protectors are set with the hardtop rear door seal which ends at the truck bed floor level. In this way, the sides of the vehicle tailgate are sealed.

Art. 1901063



Please note, this is an illustrative photo showing Standard version with solid side panels.

CHECK THE PRICE AT:

WWW.ROADRANGER.PL



HARDTOP NI KC RH04 IE FS2 (PROFI+)

Premium Hardtop in Profi+ version, i.e. with side windows which open upwards (remote control opening).

Features: cab high, glazed rear door (glass in ABS frame), heated rear screen, integrated spoiler with the third brake light, non-opening bulkhead window, carpeted lining, automatic interior LED light, rear door lock integrated with the car's central lock system, color coded, complete mounting set.

The hardtop is equipped with tailgate water protectors, i.e. thermoformed items riveted to the vehicle's body near the rear lamps. The protectors are set with the hardtop rear door seal which ends at the truck bed floor level. In this way, the sides of the vehicle tailgate are sealed.

Art. 1901061



Please note, this is an illustrative photo showing Standard version with solid side panels.

CHECK THE PRICE AT:

WWW.ROADRANGER.PL



ALUCOVER DC SILVER

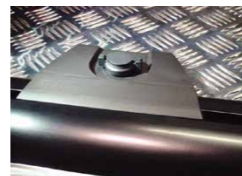
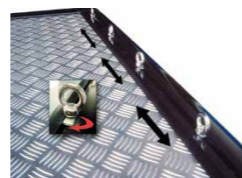
Made of aluminium chequer plate.

- Weight: 35-45 kg.
- Maximum load 100 kg.
- Non-invasive installation within one hour.
- Hinge system that allows the cover to be removed within a few minutes.
- Patented water drain system.

Available accessories:

- Roll bars silver, mounted to the cover (raised together with it)
- Roll bars black, mounted to the cover (raised together with it)
- set of crossbars (2 pcs)
- automotive clips (6 szt.)

Art. EVO320



CHECK THE PRICE AT:

WWW.ROADRANGER.PL



ALUCOVER DC BLACK

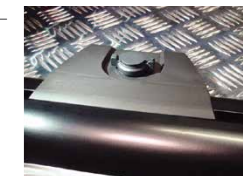
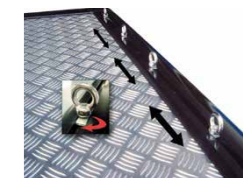
Made of aluminium chequer plate, black painted.

- Weight: 35-45 kg.
- Maximum load 100 kg.
- Non-invasive installation within one hour.
- Hinge system that allows the cover to be removed within a few minutes.
- Patented water drain system.

Available accessories:

- Roll bars silver, mounted to the cover (raised together with it)
- Roll bars black, mounted to the cover (raised together with it)
- set of crossbars (2 pcs)
- automotive clips (6 szt.)

Art. EVO320B



CHECK THE PRICE AT:

WWW.ROADRANGER.PL



FRONT BAR

EU-certified high-quality stainless steel Front Bar.
Mounted to the original vehicle points.
Contains the necessary mounting elements and an installation guide.
Available also in black color (art. EC/SB/400/PL).

Ask the consultant for a full offer.

CHECK THE PRICE AT:

WWW.ROADRANGER.PL



SIDE BARS

High-quality stainless steel Side Bars.
Mounted to the original vehicle points.
Contains the necessary mounting elements and an installation guide.
Available also in black color (art. P/400/PL).

Ask the consultant for a full offer.

CHECK THE PRICE AT:

WWW.ROADRANGER.PL



STYLING BAR WITH CROSSPIECE

High-quality stainless steel Styling Bar with crosspiece.
Mounted to the original vehicle points.
Contains the necessary mounting elements and an installation guide.
Available also in black color (art. RLSS/K/2400/PL).

Ask the consultant for a full offer.

CHECK THE PRICE AT:

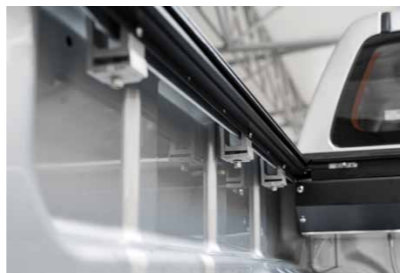
WWW.ROADRANGER.PL



ROLL COVER NISSAN NAVARA NP300

Lockable waterproof aluminium roll cover with black vinyl coating. In addition to the visual effect, vinyl prevents dirt from getting between panels which thus prevents incorrect operation. The roll cover is a convenient way to cover the truck bed. If opened, it enables the transporting of high loads. When opening, the cover retracts in the case located against the front wall of the truck bed. In the closed position, the vehicle's rear door is also locked. Installed with clamps to the truck bed edges.

Roll cover for a vehicle without styling bar.



CHECK THE PRICE AT:

WWW.ROADRANGER.PL

Art. H273



SET OF SKID PLATES ALU 4.0 MM NISSAN NAVARA NP300

Set of skid plates for Nissan Navara NP300 D23.

Skid plates made of high-quality aluminium, 4 mm thick, perfectly shaped and mounted to the original points on the vehicle. The set consists of following skid plates: engine block, gearbox, differential and fuel tank.

Contains the necessary mounting elements and an installation guide.



CHECK THE PRICE AT:

WWW.ROADRANGER.PL

Art. 23333.4164.RR



SLIDING TRAY

The optimum combination of quick access with load securing possibilities according to EU directives and VDI standards (DIN 75410-compliant).

Up to 500 kg maximum load in the driving (non-extended) position, in full extension up to 250 kg.

The design allows the optimum use of the truck bed.

A resistant waterproof plywood plate with a non-slip surface, frames seated on bearings, black powder-coated zinc-plated protective rails, 5-degree braking system, mounted to the truck bed floor.

CHECK THE PRICE AT:

WWW.ROADRANGER.PL

Art. 2700044



WEAPONS DRAWER

Lockable drawer for weapons, with a foam bottom, lid and inserts.

Dimensions: 1200 mm x 350 mm

CHECK THE PRICE AT:

WWW.ROADRANGER.PL

Art. W502121



ALUMINIUM RAMP

Aluminium access ramp – 28 cm wide, 215 cm long, 115 cm when folded, only 7.5 kg in weight, capacity up to 250 kg. A loading ramp for pickups, vans, trailers and more. Ideal for loading a motorcycle, quad, heavy equipment, etc.



CHECK THE PRICE AT:

WWW.ROADRANGER.PL

Art. R007



DOG RAMP

A practical ramp for small and large animals with anti-slip surface. Light-weight (5.8kg) and resistant (180kg). The ramp extends to approx. 184cm.



CHECK THE PRICE AT:

WWW.ROADRANGER.PL

Art. R008



BEDLINER DC - UNDERRAIL NI

Perfect protection for the truck bed. Impact-, acid-, oil- and salt-resistant bedliner with rear door protection. The underrail version which allows the installation of a hardtop, cover, roll cover or styling roll bars.

Illustrative photo

CHECK THE PRICE AT:

WWW.ROADRANGER.PL

Art. 501248



TRANSPORT TUB

A venison transport and general-purpose plastic tub, very robust.

Provided with comfortable handles for it to be easily pulled onto the truck bed.

Max. carrying capacity: up to 80 kg

Dimensions: 910 x 600 x 200 mm

Heavy loads can be pulled in using the Multiramp (Art.-No. 240015) or Aluminium ramp (R007).

CHECK THE PRICE AT:

WWW.ROADRANGER.PL

Art. 790019



WATER CANISTER, 20L

Ideal wherever there is no access to running water. It is equipped with an additional 12V electric pump. The canister is often used by hunters and dog owners. The container is made of solid plastic.

CHECK THE PRICE AT:

WWW.ROADRANGER.PL

Art. 21004



UNIVERSAL TOOLBOX

A lockable toolbox made of impact- and weather-resistant plastic, with functional equipment and a universal mounting kit.

CHECK THE PRICE AT:

WWW.ROADRANGER.PL

Art. SB80025

ROAD RANGER®

MKT CAR-TECHNIK

Spokojna 5 Street
14-100 Ostróda
Poland
Phone: 48 89 646 13 23

info@roadranger.pl
www.roadranger.pl

Dealer:

We reserve the right to changes. Product images are for illustrative purposes only and may differ from the actual product.

