

# Why Tessera Roll+ ?

Competition

## Top Benefits

Wholesalers

Wholesalers /  
End customers



### Modular Design 3 in 1

By ordering just 1 product code per model, Tessera Roll+ could be transformed to 3 different product codes. This means:

✓ No need of three times more space to warehouse

✓

✓

X

✓ Three times less shipping costs

✓

-

X

✓ Lower risk for remaining stock (1 product vs 3)

✓

-

X

✓ Easier order forecast

✓

-

X

✓ Easy transformation with s-kit or e-kit with no use of tools (Quick Release Lever) or special knowledge

✓

✓

X

✓ Gives the benefit to the end customer to upgrade his Tessera Roll+ at any time

✓

✓

X



## Smart AI Control Board

The only roll top cover in the global market with Artificial Intelligence board. This means:

### ✓ Auto calibration of motor

(no need of a special procedure in case of first fitting, replacement of motor and in case in low temperatures)

### ✓ Maintenance alerts

The most common claims for all roll top covers around the world are for maintenance. For the end users is not easy to remember to follow the proper care and usage instructions and as a result they identify or realise the problems too late. As a consequence they will have to be charged for additional costs of the damaged spare parts or they won't have the proper functionality to their roll tops. Now Tessera Roll+ users have the advantage to receive pop up maintenance alerts directly to their mobile as they stay connected with their Tessera Roll+ all the time. So they will be notified for the most important and common issues like:

### a) Canister's cleaning




In case of blocked water inside the canister's area (it prevents problems to the whole structure or in cases with spring/motor)

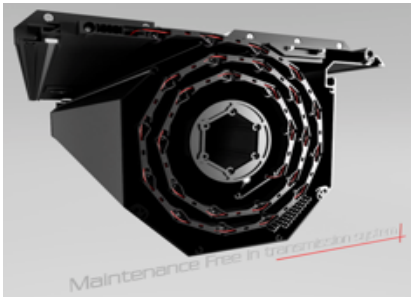
### b) Side rails parts cleaning & lubricating

It calculates the time that the roll needs to open and close and after 10 confirmations it notifies you that the standard period is exceeded

### c) Motor failure



<p><b>✓ Share event history</b></p> <p>Tessera Roll+ users can view and share the event history and functionality of their roll. This means the best after sales care service that the final users could imagine</p>	✓	✓	✗
<p><b>✓ 4 MODES of operation</b></p>	✓	✓	✗
			
<p>a) Specially designed remote controls</p>	✓	✓	✗
			
<p>b + c) Mobile app + Voice Commands</p>	✓	✓	✗
			
<p>d) The unique <b>“ONE Touch”</b> function.</p> <p>This means that the rear slat functions as huge aluminium button (there are not physical buttons to the side rails like in competition where are not working in low temperatures and are easy to be damaged as they are exposed to weather conditions and in case of stealing)</p>	✓	✓	✗

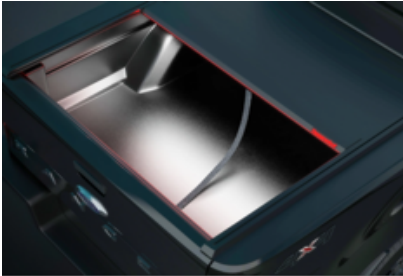


## Electricity to rolling part

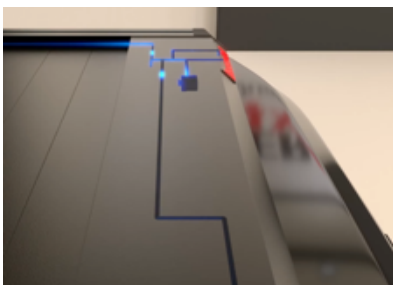
Tessera4x4 is the only company in the world that managed to transform electricity to the rolling part and as a result:



a) To put beautiful and practical red LED light bar, which can be used as beam light, brake light and in the case of the e-Kit as an obstacle warning signal or even as an extra alarm in case of emergency

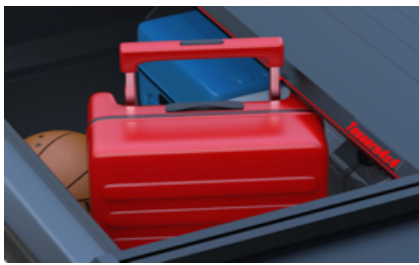


b) To have a moving full-length white led light bar located inside the rolling end slat which brightens and highlights the focus of the trunk bed area (regardless of the load in the trunk area). Comparing to the competition with stable side or front lights that can be easily blinded



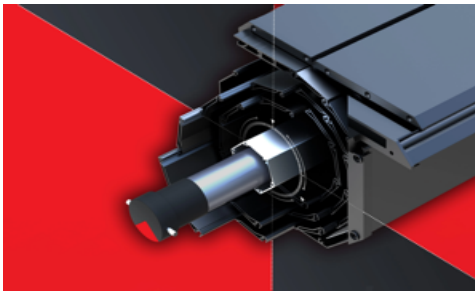
c) To put physical sensors into the end slat as a result to function as physical main control button and as an obstacle sensor





## ✓ Obstacle physical sensors

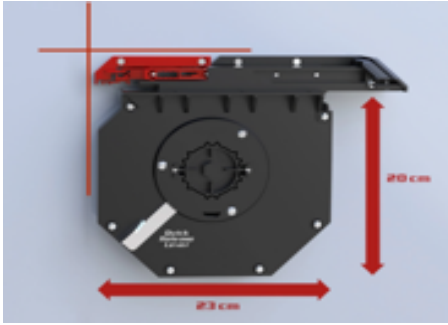
Since physical sensors are embedded to the end slat, Tessera Roll+ senses directly (in real time) the obstacle with no use of motor current. All the competition uses the motor current to sense obstacles which means that they are not 100% secure especially in children's cases. Also, by using motor current then the motor will be damaged quicker



## ✓ Heavy-duty shaft

Located inside canister's area. Within shaft could be located the spring (s-Kit) or electric motor (e-Kit), to be sealed and protected. As a result, we take no extra space of the trunk area to put motor (in comparison with the competition located in a separate side box outside the canister or located in 2nd shaft with bigger canister) or unprotected to the trunk bed





## ✓ Innovative design & Compact size

Rear slat goes inside to the canister's area in combination of the smallest canister's dimensions (20cm x 23cm) (Space cab / Single cab / American models 26cm x 30cm (HxW)), offers the advantage of maximizing load net capacity both in length and height. In comparison with the competition that the end slat exceeds from the canister area

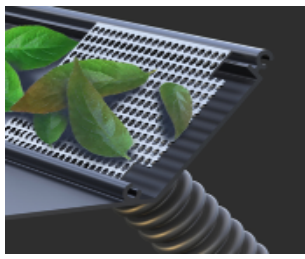


## ✓ Mobile App Configurations

Experience a whole new environment of configurations

- a) Lights adjustments like: on/off, brightness of red/white lights, timer of white light, etc.,
- b) Easy pairing of new remote controls in case of lost remote controls
- c) Accessibility with Siri/Google Assistant, etc.,
- d) Monitoring your Tesseract Roll+ operation circles and lights
- e) Online installation guides, videos, brochures and support





**✓ The one and only Anti-Leaf System (ALS)**

Tessera Roll+ is the only roll top cover in the global market with a specially made obstruction system (anti-leaf system), to protect the water drains of canister from leaves and small trash



**✓ Side rail parts (5mm thickness)**

Specially made (100% handmade) side rails with 5mm thickness, which follows 100% the shape and the design of the trunk's rail parts (in length and width). This offers the following benefits:



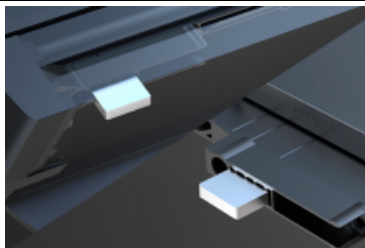
a) Better insulation from any weather conditions



b) Reinforce the vehicle's rail parts



c) Free surface to drill in order to install all types of roll bars, side handrails and loading bars (in cases of heavy usage)



**✓ Aluminium Locking Teeth (ALT)**

The only roll top cover with "AUTOMATIC ALUMINIUM" locking teeth for maximum security (no plastic) of the load



# **Information**

## **Export Department:**

Tel: +30 210 5542813 (ext: 608)

email address: vp@gianso.gr

Working Hours: Monday-Friday 08:00-16:00 (EET)

Skype address: vp@gianso.gr

<https://tessera4x4.com/>