

- Extra reinforced steel cast body through the heat treatment and industrial design
- Light and robust design
- 100% Holding negative-acting hydraulic brake system.
- Standard pressure roller and roller fairlead.
- Easy assembly, high rope capacity and high torque hydromotor
- Standard manual rope unloading system
- CE Machinery Directive 2006/42/EC
- Meets SAE J706 rating

## Specifications

<b>Max. pulling capacity (kg / lbs)</b>	: 8000 lbs ( 3630 kg )
<b>Max. rope length (m / ft)</b>	: 51.8 m ( 170 ft )
<b>Recommended wire rope (mm / in)</b>	: 10mm (3/8") 1960 Mpa
<b>Hydromotor (cc / in<sup>3</sup>)</b>	: 315 cc (18,4 in <sup>3</sup> )
<b>Max. pump flow (L / min - g / min)</b>	: 60 L/min ( 15.8 g/min )
<b>Gear ratio</b>	: 5,6 : 1
<b>Oil types and capacity</b>	: 85W 90 - 0,75 L
<b>Max. working pressure (bar / psi)</b>	: 110 bar ( 1595 psi )

### Winch : ( kg / lbs )

59,5 kg (130,9 lbs)

### Roller Fairlead : ( kg / lbs )

6 kg (13,22 lbs)

### Cable Tensioner : ( kg / lbs )

2,5 kg (5,51 lbs)

### Mounting Bolts

8 Adet M14 8,8

### Standards

Cable tensioner  
Roller Fairlead  
Manual Clutch

### Optional

Air Clutch  
IP67 - IP 68

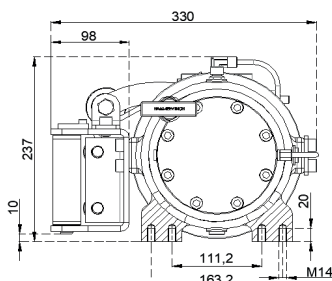
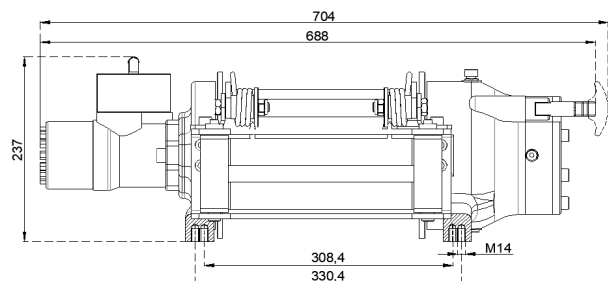
### Hydraulic Inlets

G 1/2"

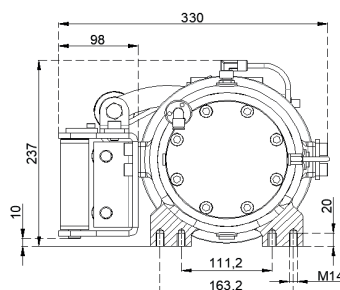
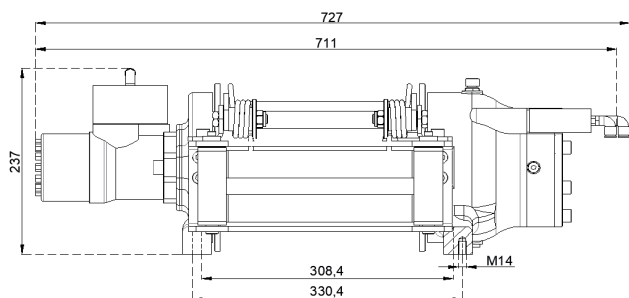
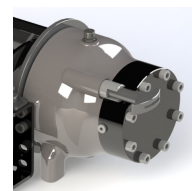
Rope Winding Layer	Pulling Capacity kg / lbs	Rope Speed m / min - ft / min	Rope Length m / ft
1	3630 kg / 8000 lbs	11 m/min - 36 ft/min	8 m / 26.2 ft
2	3124 kg / 6887 lbs	12.7m/min - 41.8 ft/min	16.8 m / 55.1 ft
3	2742 kg / 6045 lbs	14.5 m/min - 47.6 ft/min	27.4 m / 89.9 ft
4	2444 kg / 5387 lbs	16.3 m/min - 53.4 ft/min	38.7m / 126.9 ft
5	2204 kg / 4858 lbs	18 m/min - 59 ft/min	51.8m / 170 ft

### Warning !

- Before operating the winch, A-B lines must be open to T line (tank line) of the control valve in center position.
- This winch is designed and manufactured for pulling, don't lift person or material.
- Always keep last 5 wrap on the drum.
- The technical details given above are just for information.
- HAMMER WINCH keeps the right to change the technical details.
- Pneumatic Working Pressure: Min 9 bar - Max 12 bar (Min130 psi - Max174 psi)



Manual Clutch



Air Clutch

