

- Extra reinforced steel cast body through the heat treatment and industrial design
- Light and robust design
- 100% Holding negative-acting hydraulic brake system.
- Standard pressure roller and roller fairlead.
- Easy assembly, high rope capacity and high torque hydromotor
- Standard manual rope unloading system
- EN 14492-1 : 2006 Power Driven winches supported
- CE Machinery Directive 2006/42/EC

## Specifications

Max. pulling capacity (kg / lbs)	: 4300 kg ( 9477 lbs )
Max. rope length (m / ft)	: 48 m ( 157 ft )
Max. rope length for EN (m / ft)	: 36 m ( 118 ft )
Recommended wire rope (mm / in)	: 11 mm ( 4/9" ) 1960 Mpa
Hydraulic Motor (cc / in <sup>3</sup> )	: 315 cc ( 19 in <sup>3</sup> )
Max. pump flow (L / min - g / min)	: 60 L/min ( 15.8 g/min )
Gear ratio	: 5,6 : 1
Oil types and capacity	: 85W 90 - 0,75 L
Max. working pressure (bar / psi)	: 120 bar ( 1740 psi )

Rope Winding Layer	Pulling Capacity kg / lbs	Rope Speed m / min - ft / min	Rope Length m / ft
1	4300 kg / 9477 lbs	11m/min - 36 ft/min	7m / 23 ft
2	3657 kg / 8060 lbs	13m/min - 42 ft/min	16 m / 52 ft
3	3181 kg / 7010 lbs	15m/min - 49 ft/min	25 m / 82 ft
EN 4	2815 kg / 6204 lbs	17m/min - 55ft/min	36 m / 118 ft
5	2524 kg / 5564 lbs	19 m/min - 62ft/min	48 m / 157 ft

**Winch : (kg / lbs)**  
59,5 kg (130,9 lbs)

**Roller Fairlead : ( kg / lbs )**  
6 kg (13,22 lbs)

**Cable Tensioner : ( kg / lbs )**  
2,5 kg (5,51 lbs)

**Mounting Bolts**  
8 pieces M14 8,8

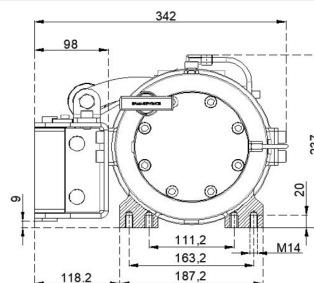
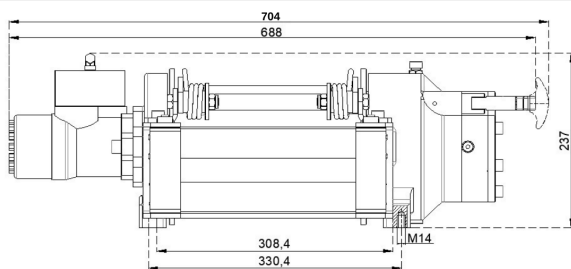
**Standards**  
Cable tensioner  
Roller Fairlead  
Manual Clutch

**Optional**  
Air Clutch  
IP67 - IP 68

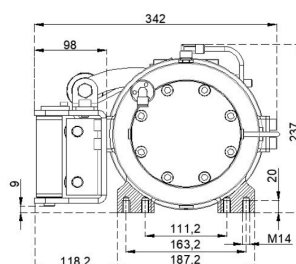
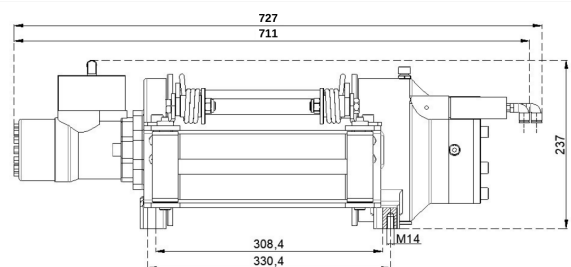
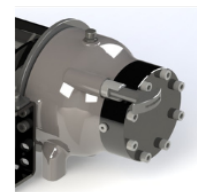
**Hydraulic Inlets**  
G 1/2"

## Warning !

- Before operating the winch, A-B lines must be open to T line (tank line) of the control valve in center position.
- This winch is designed and manufactured for pulling, don't lift person or material.
- Always keep last 5 wrap on the drum.
- The technical details given above are just for information.
- HAMMER WINCH keeps the right to change the technical details.
- Pneumatic working pressure: Min 9bar - Max 12 bar (Min 130 psi - Max 174 psi)



Manual Clutch



Air Clutch

