

- Extra reinforced steel cast body through the heat treatment and industrial design.
- Light and robust design.
- 100% Holding negative-acting hydraulic brake system.
- Standard pressure roller and roller fairlead.
- Easy assembly, high rope capacity and high torque hydromotor.
- Standard manual rope unloading system.
- CE Machinery Directive 2006/42/EC
- Meets SAE J706 rating

## Specifications

<b>Max. pulling capacity (lbs / kg)</b>	: 18000 lbs ( 8167 kg )
<b>Max. rope length (m / ft)</b>	: 36.6 m ( 120 ft )
<b>Recommended wire rope (mm / in)</b>	: 16 mm ( 5/8" ) 1960 Mpa
<b>Hydraulic Motor (cc / in³)</b>	: 400 cc ( 24 in³ )
<b>Max. pump flow (L / min - g / min)</b>	: 75 L/min ( 19.8 g/min )
<b>Gear ratio</b>	: 5,2 : 1
<b>Oil types and capacity</b>	: 85W 90 - 0,9 L
<b>Max. working pressure (bar / psi)</b>	: 220 bar (3190 psi)

### Winch : ( kg / lbs )

102 kg ( 224.8 lbs )

### Roller Fairlead : ( kg / lbs )

11 kg ( 24,2 lbs )

### Cable Tensioner : ( kg / lbs )

4,5 kg ( 9,9 lbs )

### Mounting Bolts

16 pieces M12

### Standards

Cable tensioner  
Roller Fairlead  
Manual Clutch

### Optional

Air Clutch  
IP67 - IP 68

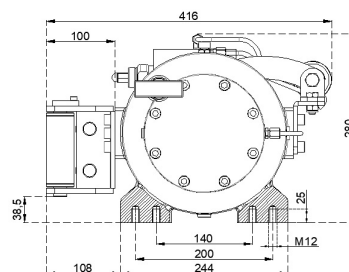
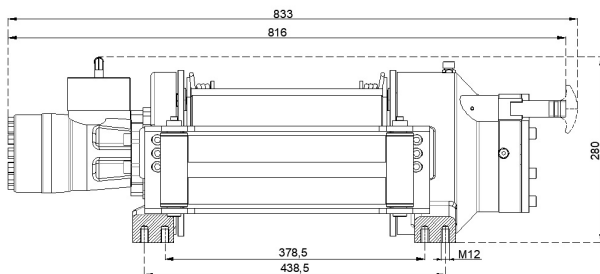
### Hydraulic Inlets

G 1/2"

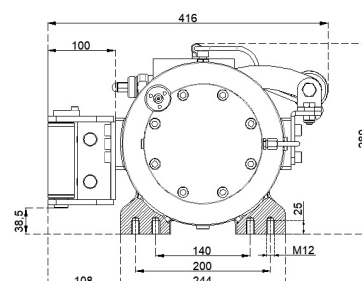
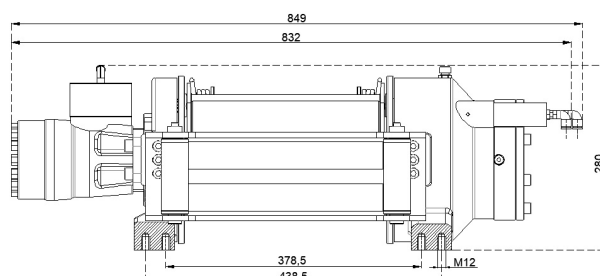
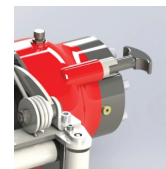
Rope Winding Layer	Pulling Capacity kg / lbs	Rope Speed m / min- ft / min	Rope Length m / ft
<b>1</b>	8167 kg / 18000 lbs	13 m/min - 43 ft/min	7 m / 23 ft
<b>2</b>	6655 kg / 14669 lbs	16 m/min - 52.5 ft/min	15.3 m / 50 ft
<b>3</b>	5616 kg / 12378 lbs	19 m/min - 62.5 ft/min	25.4 m / 83.3 ft
<b>4</b>	4857 kg / 10706 lbs	22 m/min - 72.2 ft/min	36.6 m / 120 ft

### Warning !

- Before operating the winch, A-B lines must be open to T line (tank line) of the control valve in center position.
- This winch is designed and manufactured for pulling, don't lift person or material.
- Always keep last 5 wrap on the drum.
- The technical details given above are just for information.
- HAMMER WINCH keeps the right to change the technical details.
- Pneumatic working pressure: Min 9 bar - Max 12 bar (Min 130 psi - Max 174 psi)



Manual Clutch



Air Clutch

