

- Extra reinforced steel cast body through the heat treatment and industrial design.
- Light and robust design.
- 100% Holding negative-acting hydraulic brake system.
- Standard Pressure Roller and Roller Fairlead.
- Easy assembly, high rope capacity and high torque hydromotor.
- Standard manual rope unloading system.
- CE Machinery Directive 2006/42/EC
- Meets SAE J706 rating

### Specifications

<b>Max. pulling capacity (lbs / kg)</b>	: 15500 lbs ( 7033 kg )
<b>Max. rope length (m / ft)</b>	: 39 m ( 128 ft )
<b>Recommended wire rope (mm / in)</b>	: 14 mm ( 5/9" ) 1960 Mpa
<b>Hydraulic Motor (cc / in³)</b>	: 400 cc ( 24 in³ )
<b>Max. pump flow (L / min - g / min)</b>	: 75 L/min ( 19.8 g/min )
<b>Gear ratio</b>	: 5,2 : 1
<b>Oil types and capacity</b>	: 85W 90 - 0,9 L
<b>Max. working pressure (bar / psi)</b>	: 190 bar (2755 psi)

### Winch : ( kg / lbs )

102 kg ( 224.8 lbs)

### Roller Fairlead : ( kg / lbs )

11 kg (24,2 lbs)

### Cable Tensioner : ( kg / lbs )

4,5 kg (9,9 lbs)

### Mounting Bolts

16 pieces M12

### Standards

Cable tensioner  
Roller Fairlead  
Manual Clutch

### Optional

Air Clutch  
IP67 - IP 68

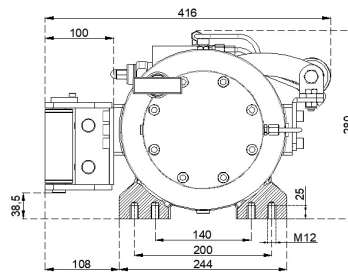
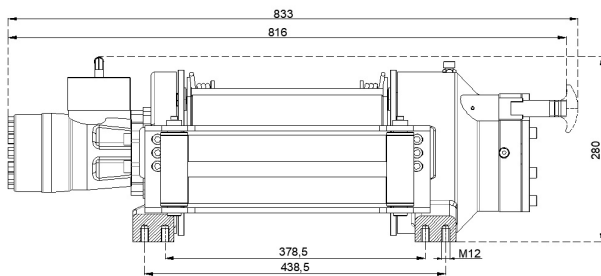
### Hydraulic Inlets

G 1/2"

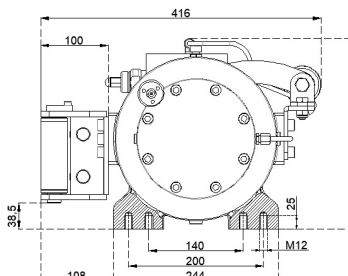
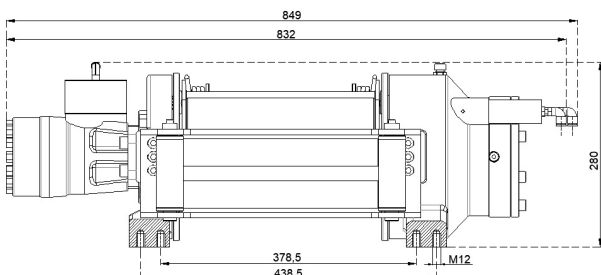
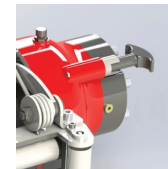
Rope Winding Layer	Pulling Capacity kg / lbs	Rope Speed m / min- ft / min	Rope Length m / ft
<b>1</b>	7033 kg / 15500 lbs	12.9 m/min - 42.3 ft/min	7.7 m / 25.2 ft
<b>2</b>	5849 kg / 12893 lbs	15.5 m/min - 50.8 ft/min	16.5 m / 54 ft
<b>3</b>	5006 kg / 11034 lbs	18 m/min - 59 ft/min	27 m / 89 ft
<b>4</b>	4375 kg / 9644 lbs	20.7 m/min - 68 ft/min	39 m / 128 ft

### Warning !

- Before operating the winch, A-B lines must be open to T line (tank line) of the control valve in center position.
- This winch is designed and manufactured for pulling, don't lift person or material.
- Always keep last 5 wrap on the drum.
- The technical details given above are just for information.
- HAMMER WINCH keeps the right to change the technical details.
- Pneumatic working pressure: Min 9 bar - Max 12 bar (Min 130 psi - Max 174 psi)



Manual Clutch



Air Clutch

