

- Extra reinforced steel cast body through the heat treatment and industrial design
- Light and robust design
- 100% Holding negative-acting hydraulic brake system.
- Standard pressure roller and roller fairlead.
- Easy assembly, high rope capacity and high torque hydromotor
- Standard manual rope unloading system
- CE Machinery Directive 2006/42/EC
- Meets SAE J706 rating

Specifications

Max. pulling capacity (kg / lbs)	: 12000 lbs (5445 kg)
Max. rope length (m / ft)	: 33.5 m (109.5 ft)
Recommended wire rope (mm / in)	: 12mm (1/2") 1960 Mpa
Hydromotor (cc / in³)	: 315 cc (18,4 in ³)
Max. pump flow (L / min - g / min)	: 60 L/min (15.8 g/min)
Gear ratio	: 5,6 : 1
Oil types and capacity	: 85W 90 - 0,75 L
Max. working pressure (bar / psi)	: 165 bar (2393psi)

Winch : (kg / lbs)

59,5 kg (130,9 lbs)

Roller Fairlead : (kg / lbs)

6 kg (13,22 lbs)

Cable Tensioner : (kg / lbs)

2,5 kg (5,51 lbs)

Mounting Bolts

8 Adet M14 8,8

Standards

Cable tensioner
Roller Fairlead
Manual Clutch

Optional

Air Clutch
IP67 - IP 68

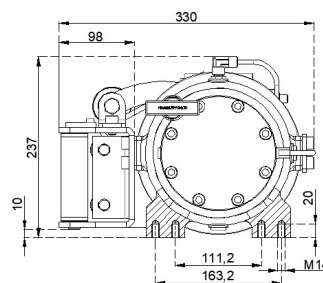
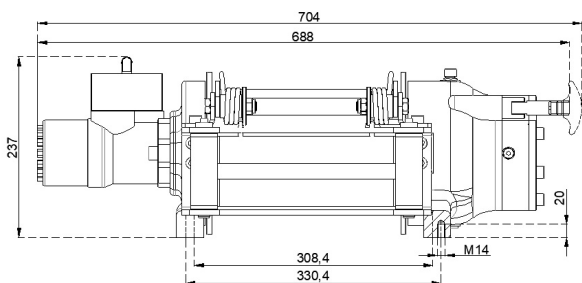
Hydraulic Inlets

G 1/2"

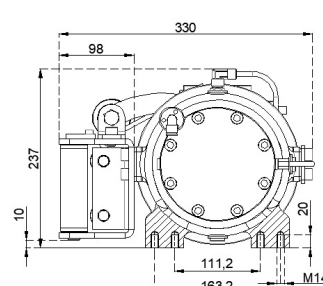
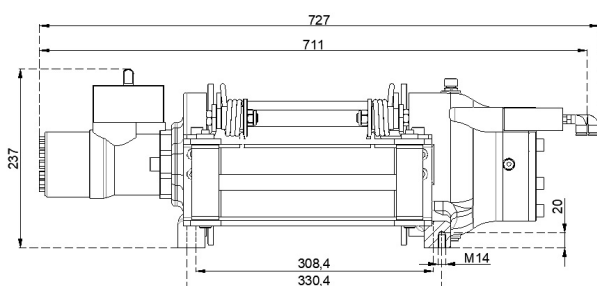
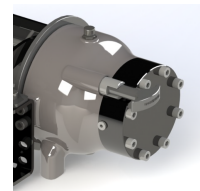
Rope Winding Layer	Pulling Capacity kg / lbs	Rope Speed m / min- ft / min	Rope Length m / ft
1	5445kg / 12000 lbs	11 m/min - 36.6 ft/min	6.7 m / 22 ft
2	4576 kg / 10087 lbs	13.3 m/min - 43.5 ft/min	14.2 m / 46.5 ft
3	3947 kg / 8699 lbs	15.4 m/min - 50.5 ft/min	23.5 m / 77 ft
4	3469 kg / 7648 lbs	17.5 m/min - 57.4 ft/min	33.5 m / 109.5 ft

Warning !

- Before operating the winch, A-B lines must be open to T line (tank line) of the control valve in center position.
- This winch is designed and manufactured for pulling, don't lift person or material.
- Always keep last 5 wrap on the drum.
- The technical details given above are just for information.
- Pneumatic Working Pressure: Min 9 bar - Max 12 bar (Min130 psi - Max174 psi)



Manual Clutch



Air Clutch

