

- Extra reinforced aluminium cast body through the heat treatment and industrial design.
- Light and robust design.
- 100% Holding negative-acting hydraulic brake system.
- Standard pressure roller and roller fairlead.
- Easy assembly, high rope capacity and high torque hydromotor
- Standard manual rope unloading system
- CE Machinery Directive 2006/42/EC
- Meets SAE J706 rating

## Specifications

<b>Max. pulling capacity (kg / lbs)</b>	: 4000 kg ( 8816 lbs )
<b>Max. rope length (m / ft)</b>	: 53.8 m ( 176 ft )
<b>Recommended wire rope (mm / in)</b>	: 10mm (3/8") 1960 Mpa
<b>Hydromotor (cc / in³)</b>	: 250 cc ( 15 in³ )
<b>Max. pump flow (L / min - g / min)</b>	: 60L ( 15.8 gal )
<b>Gear ratio:</b>	: 5,6 : 1
<b>Oil types and capacity</b>	: 85W 90 - 0,75 L
<b>Max. working pressure (bar / psi)</b>	: 140 bar ( 2030 psi )

### Winch : ( kg / lbs )

54 kg ( 119 ) lbs

### Roller Fairlead : ( kg / lbs )

6 kg ( 13,22 lbs )

### Cable Tensioner : ( kg / lbs )

2,5 kg ( 5,51 lbs )

### Mounting Bolts

8 Adet M14 8,8

### Standards

Cable tensioner  
Roller Fairlead  
Manual Clutch

### Optional

Air Clutch  
IP67 - IP68

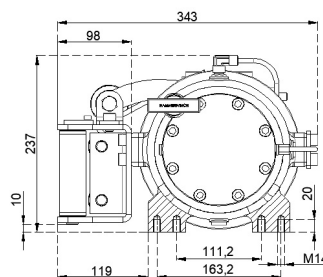
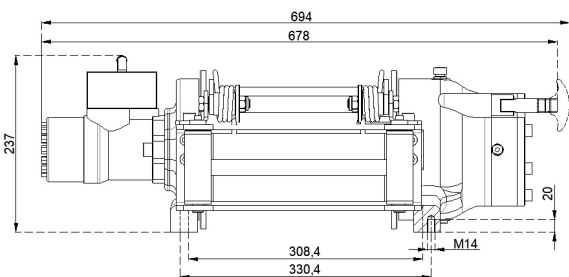
### Hydraulic Inlets

G 1/2"

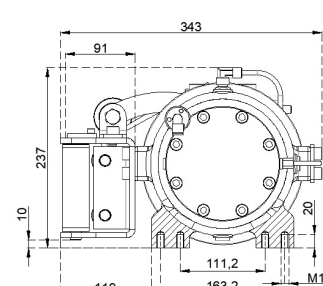
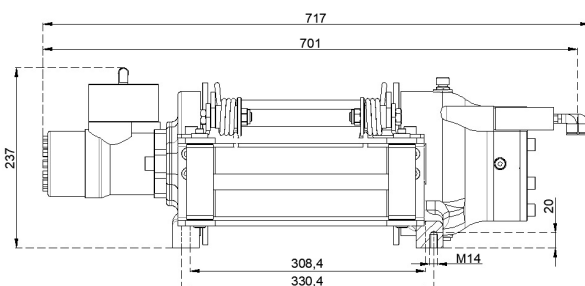
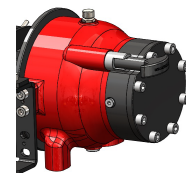
Rope Winding Layer	Pulling Capacity kg / lbs	Rope Speed m / min - ft / min	Rope Length m / ft
<b>1</b>	4000 kg / 8816 lbs	14 m/min - 46 ft/min	8.4m / 27.5ft
<b>2</b>	3445 kg / 7594 lbs	16 m/min - 53 ft/min	17.8m / 58ft
<b>3</b>	3024 kg / 6666 lbs	18 m/min - 61 ft/min	28.3m / 92.8ft
<b>4</b>	2695 kg / 5940 lbs	21 m/min - 69 ft/min	40.6m / 133 ft
<b>5</b>	2430 kg / 5356 lbs	23 m/min - 76 ft/min	53.8 m / 176 ft

### Warning !!

- Before operating the winch, A-B lines must be open to T line (tank line) of the control valve in center position.
- This winch is designed and manufactured for pulling, don't lift person or material.
- Always keep last 5 wrap on the drum.
- The technical details given above are just for information.
- HAMMER WINCH keeps the right to change the technical details.
- Pneumatic Working Pressure: Min 9 bar – Max 12 bar (Min 130 psi - Max 174 psi)



Manual Clutch



Air Clutch

