

- Extra reinforced aluminium cast body through the heat treatment and industrial design
- Light and robust design
- 100% Holding negative-acting hydraulic brake system.
- Standard pressure roller and roller fairlead.
- Easy assembly, high rope capacity and high torque hydromotor
- Standard manual rope unloading system
- CE Machinery Directive 2006/42/EC
- Meets SAE J706 rating

Specifications

Max. pulling capacity (kg / lbs)	: 5000 kg (11022 lbs)
Max. rope length (m / ft)	: 35.5 m (116 ft)
Recommended wire rope (mm / in)	: 12mm (1/2") 1960 Mpa
Hydromotor (cc / in³)	: 315 cc (18,4 in ³)
Max. pump flow (L / min - g / min)	: 60 L (15.8 g)
Gear ratio:	: 5,6 : 1
Oil types and capacity	: 85W 90 - 0,75 L
Max. working pressure (bar / psi)	: 135 bar (1958 psi)

Winch : (kg / lbs)

54 kg (119 lbs)

Roller Fairlead : (kg / lbs)

6 kg (13,22 lbs)

Cable Tensioner : (kg / lbs)

2,5 kg (5,51 lbs)

Mounting Bolts

8 Adet M14 8,8

Standards

Cable tensioner
Roller Fairlead
Manual Clutch

Optional

Air Clutch
IP67 - IP 68

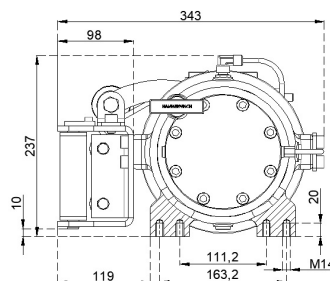
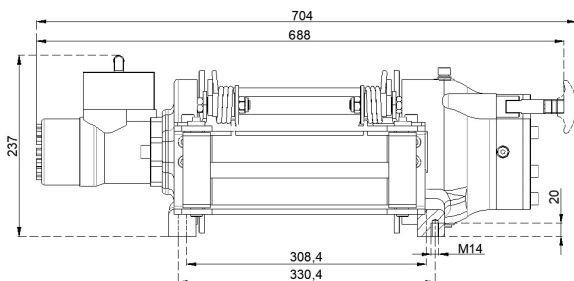
Hydraulic Inlets

G 1/2"

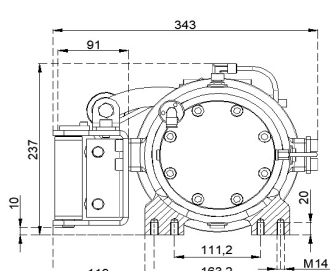
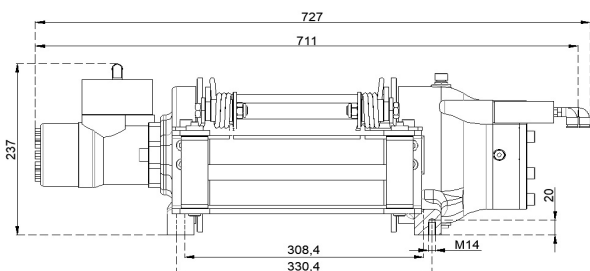
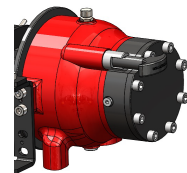
Rope Winding Layer	Pulling Capacity kg / lbs	Rope Speed m / min- ft / min	Rope Length m / ft
1	5000 kg / 11022 lbs	11 m/min - 36.6 ft/min	7.1 m / 23 ft
2	4203 kg / 9264 lbs	13.3 m/min - 43.5 ft/min	15.4 m / 50.5 ft
3	3625 kg / 7990 lbs	15.4 m/min - 50.5 ft/min	25 m / 82 ft
4	3187 kg / 7024 lbs	17.5 m/min - 57.4 ft/min	35.5 m / 116 ft

Warning!

- Before operating the winch, A-B lines must be open to T line (tank line) of the control valve in center position.
- This winch is designed and manufactured for pulling, don't lift person or material.
- Always keep last 5 wrap on the drum.
- The technical details given above are just for information.
- HAMMER WINCH keeps the right to change the technical details.
- Pneumatic Working Pressure: Min 9 bar - Max 12 bar (Min130 psi - Max174 psi)



Manual Clutch



Air Clutch

