



Thule Rapid System Kit 1349

> Instructions

SSANGYONG Korando, 3-dr SUV, 97-

The diagram is divided into four main sections:

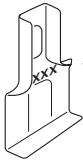
- Top Left:** A dashed box containing an information icon (i), a warning triangle, an arrow pointing to a person reading a manual, and two manuals labeled 'B' and 'A'. Manual 'B' is titled 'Thule Rapid System 1349 > Instructions' and manual 'A' is titled 'Thule Rapid System 754 > Instructions'. An arrow points from manual 'B' to manual 'A'.
- Top Right:** A weight calculation diagram. It shows a bag labeled 'xx kg / xx lbs' plus a bar labeled '7 kg / 15,4 lbs' and two screws labeled '3 kg / 6,6 lbs'. Below this, an equals sign points to a box containing 'Max. 50 kg' and 'Max. 110 lbs'.
- Bottom Left:** A dashed box containing a warning triangle, three manuals labeled 'A', 'B', and 'C' (with 'C' titled '> Security'), and a person reading a manual.
- Bottom Right:** A diagram of a car with arrows indicating the roof rack installation. A speedometer graphic shows a warning triangle between 40 km/h (25 Mph) and 130 km/h (80 Mph), with a note '80 km/h 50 Mph' above the warning zone.

ISO 11154-E

141349

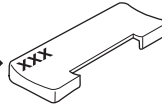
C.20140805
519-1349-01

Bring your life
thule.com

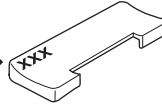


654 x4

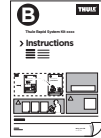
04 x2



27 x2



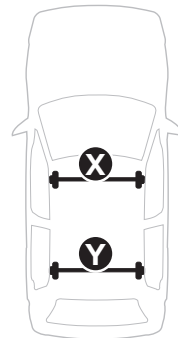
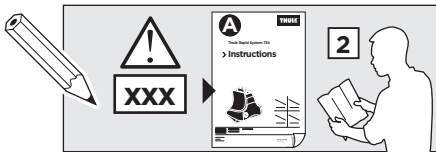
x1



x1

1

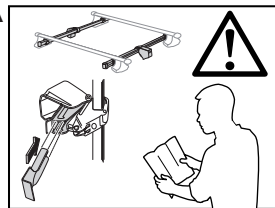
	X (scale)	X (mm)	X (inch)
SSANGYONG Korando, 3-dr SUV, 97-	52	1171	46 ¹/₈



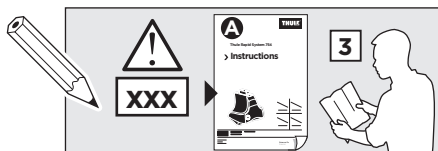
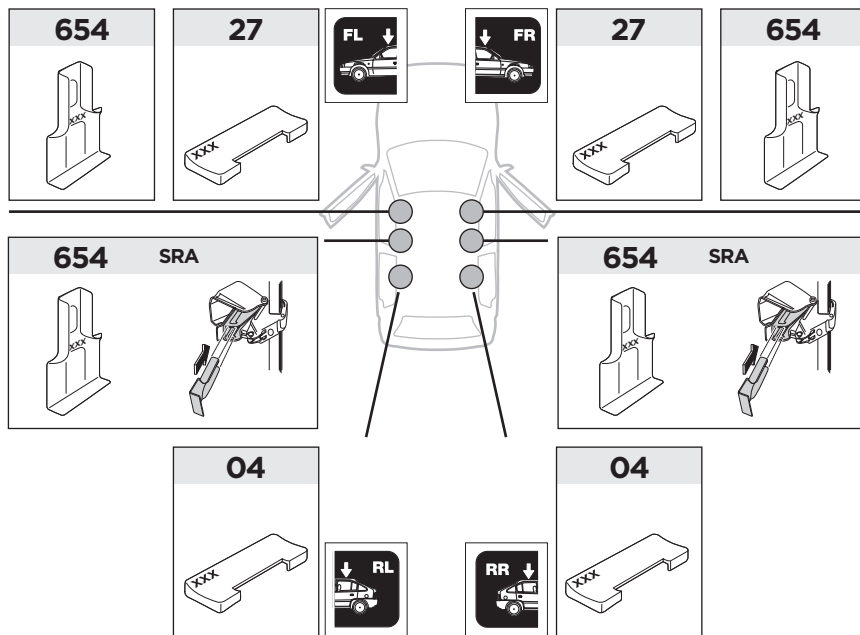
	Y (scale)	Y (mm)	Y (inch)
SSANGYONG Korando, 3-dr SUV, 97-	49,5	1146	45 ¹/₈

2

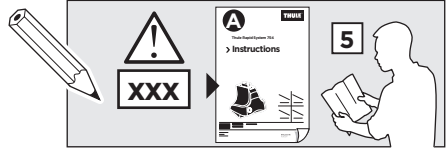
SRA



SSANGYONG Korando, 3-dr SUV, 97-



3



	W (mm)	Z (mm)	Y (mm)	W (inch)	Z (inch)	Y (inch)
SSANGYONG Korando, 3-dr SUV, 97-	250	700	480	9 7/8	27 1/2	18 7/8

